

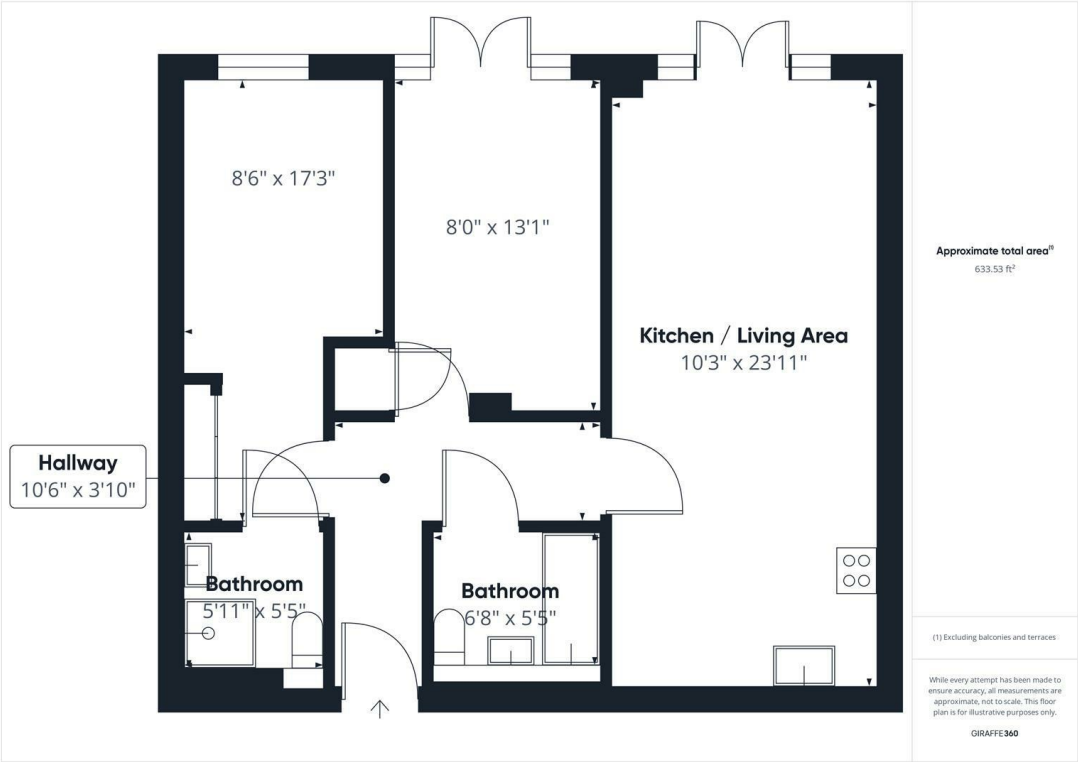


Nelson Court, Ruislip, HA4 7GF
£1,750 Per Month



Set in the heart of Ruislip this lovely property briefly comprises : Two bedrooms, family bathroom, modern fitted kitchen and spacious open-plan lounge. The property benefits include : Double glazing, gas central heating, communal entrance, private patio and allocated parking space.

This property is situated on Kingsend which is just off Ruislip High Street with it's local amenities such as Waitrose supermarket, doctors surgery, schools such as Bishop Ramsey and the bustling High Street itself which offers a good range of local shops, bus routes and rail links (Metropolitan and Piccadilly). The property is also within walking distance to West Ruislip station (Central Line).



Energy Efficiency Rating		
	Current	Potential
Very energy efficient - lower running costs		
(92 plus) A		
(81-91) B		
(69-80) C		
(55-68) D		
(39-54) E		
(21-38) F		
(1-20) G		
Not energy efficient - higher running costs		
England & Wales	EU Directive 2002/91/EC	

You may download, store and use the material for your own personal use and research. You may not republish, retransmit, redistribute or otherwise make the material available to any party or make the same available on any website. These particulars, whilst believed to be accurate are set out as a general outline only for guidance and do not constitute any part of an offer or contract. Intending purchasers should not rely on them as statements or representation of fact, but must satisfy themselves by inspection or otherwise as to their accuracy. No person in this firms employment has the authority to make or give any representation or warranty in respect of the property.